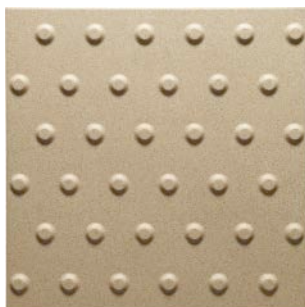


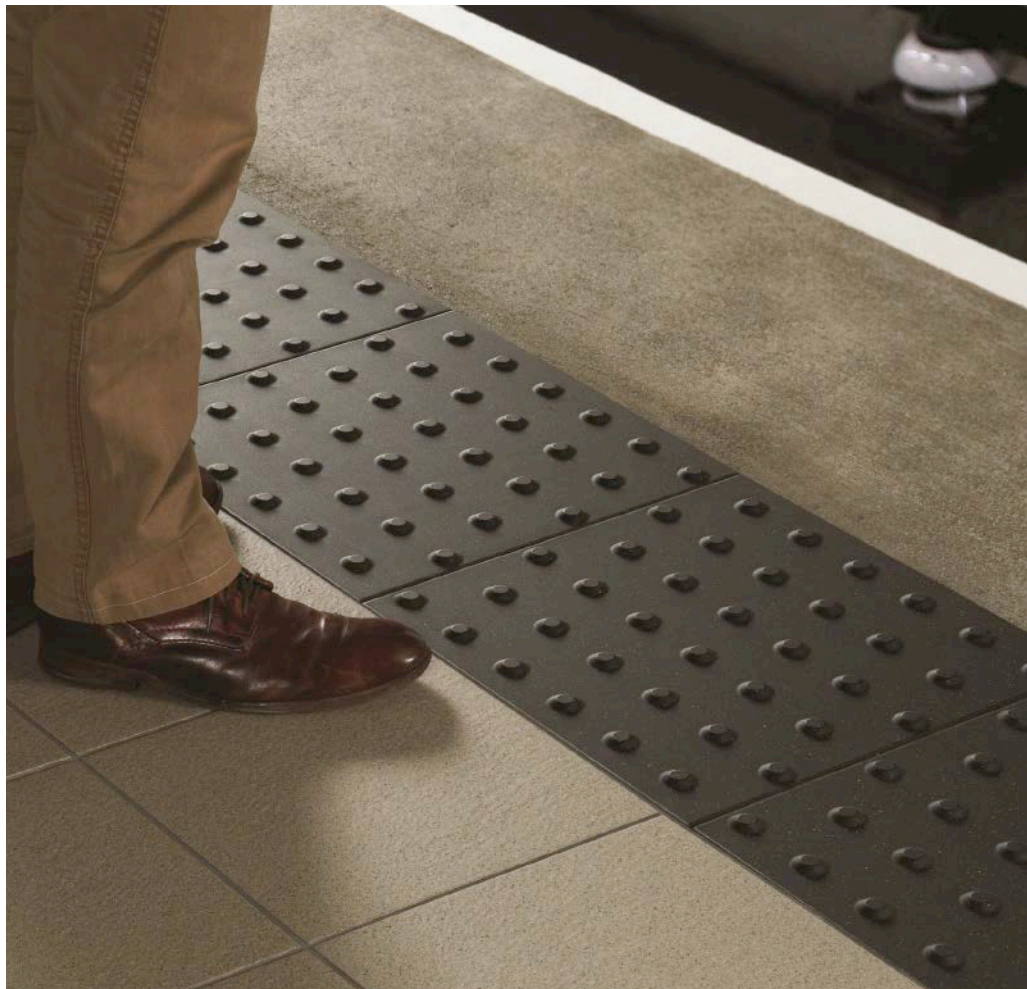
Fully Vitrified Dust Pressed Tiles - BS EN 14411:2016 GROUP B1a



ANTHRACITE BLISTER LRV 8
400 x 400 DW-TBANT4040



SAND BLISTER LRV 46
400 x 400 DW-TBSND4040



Features / Suitability

400 x 400 x 12.5mm • 6.2pcs / 27.9kg per m²

This hard wearing Tactile contains aggregate throughout. The Blister profile is designed to warn the visually impaired of the edge of all off-street platforms and pavements near crossings. It is also used for heavy rail platforms.

- ▶ Thickness of 12.5mm means it is very strong and rigid for very heavy traffic areas
- ▶ Meets the requirements of the Joint Mobility Unit of the RNIB, DETR and the CAE
- ▶ Profile conforms to British and European standards
- ▶ Exceptional performance and safety standards
- ▶ Network Rail approved
- ▶ No colour fading in UV light

DISPLACEMENT VOLUME	SHOD DRY (4S96 dry)	SHOD WET (4S96 wet)	BAREFOOT WET (TRRL 55 wet)	RAMP TEST
n/a	77	66	n/a	n/a

Tested to
London Underground Ltd
TM144:1999 Modified Standard



FULL TECHNICAL
SPECIFICATIONS
OVERLEAF

Fully Vitrified Dust Pressed Tiles - BS EN 14411:2016 GROUP BIa

	Standard	Requirement (400 x 400 x 12.5mm)	Typical test value
Length and Width	EN ISO 10545-2	+/- 0.6% max +/- 2.0 mm	400mm
Base Tile Thickness (Excluding Corderoy/Blister Height)	EN ISO 10545-2	12.5 ± 0.5mm	12.5mm
Surface Quality	EN ISO 10545-2	< 95% free from visible defects	< 97% free from visible defects
Water Absorption % by Mass	EN ISO 10545-3	< /= 0.5% Individual max 0.6%	<0.35%
Breaking Strength - Thickness > 7.5mm	EN ISO 10545-4	> 1300 N	> 4500 N
Resistance to Deep Abrasion: Removed Vol.	EN ISO 10545-6	Maximum 175 mm ³	< 130 mm ³
Thermal Shock Resistance	EN ISO 10545-9	Cycled 10 times between a temperature of 15 and 145 Degrees C	Fully Resistant
Frost Resistance	EN ISO 10545-12	100 Freeze Thaw Cycles	Resistant
Surface Roughness Rz	BS1134	Indicator - Rz > 20 microns	31 microns
Tactility	DD CEN/TS 15209:2008	DD CEN/TS 15209:2008	Conforms
Light Reflectance Value	BS 8493	Min 30 LRV between two adjacent surfaces	46 Sand 8 Anthracite
MOHS Hardness	MOHS UNE 67-101-92	MOHS Scale > plus 6	8 MOHS
Resistance to Chemicals - Low Concentrations	EN ISO 10545-13	Low Acids and Alkali	ULA No Visible Effects
Resistance to Chemicals - High Concentrations	EN ISO 10545-13	High Acids and Alkali	UHA No Visible Effects
Combustible Class	93/68/EEC	Non Combustible Class A1 _{FL}	Non Combustible Class A1 _{FL}

Recycled Content:	Pre Consumer 4%	Post Consumer 100%
Environmental	Products contain no VOC's	

Slip Resistance (TMM144:1999 Modified London Underground Limited Method)								
Test condition	Tested along		Tested across		Tested at 45 degrees		Pass/Fail CoF	Pass/Fail distance below 0.4 CoF
	CoF	Distance CoF below 0.4(mm)	CoF	Distance CoF below 0.4(mm)	CoF	Distance CoF below 0.4(mm)		
Dry	0.80	10	0.77	10	0.59	5	Pass	Pass
Wet	0.70	5	0.64	10	0.54	0	Pass	Pass

Architects, specifiers and design professionals:

For further information, advice or guidance on choosing specific Dorset Woolliscroft products please contact us on 01392 473030 / info@dorsetwoolliscroft.com