

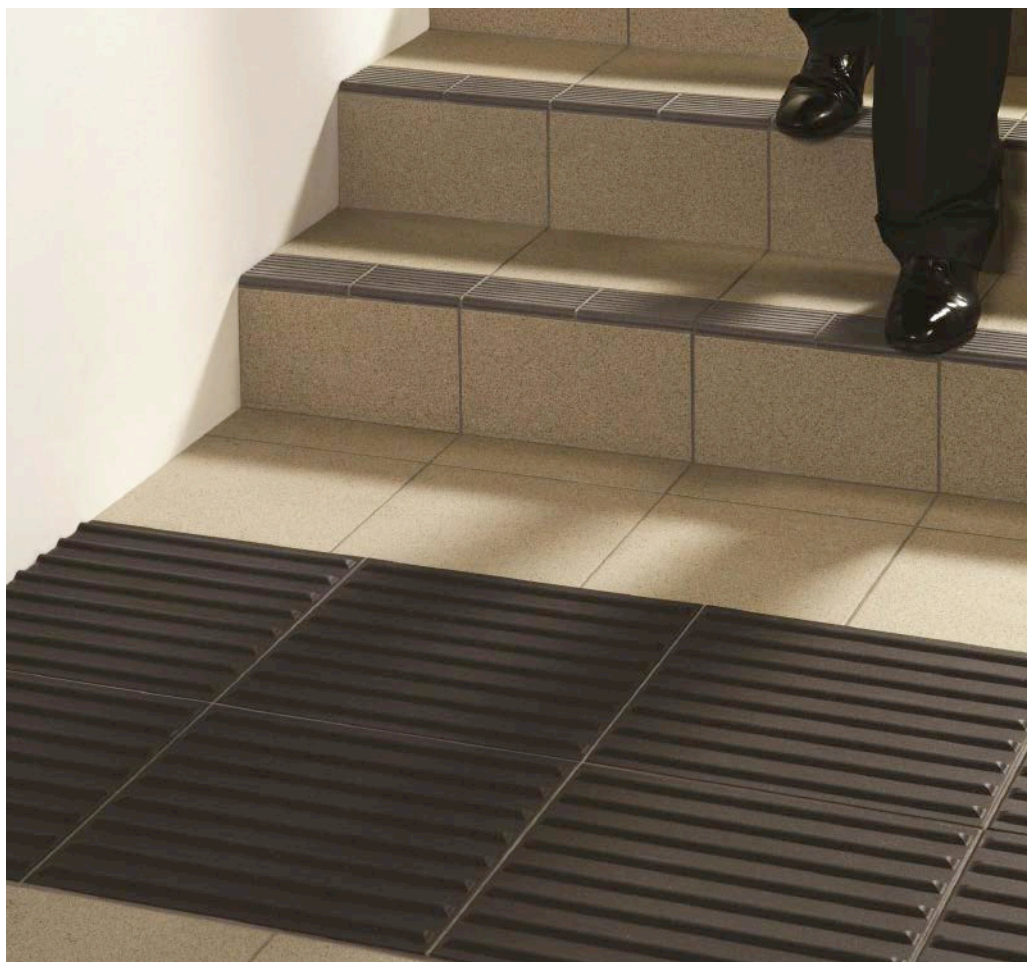
Fully Vitrified Dust Pressed Tiles - BS EN 14411:2016 GROUP BIa



ANTHRACITE CORDUROY LRV 8
400 x 400 DW-TCANT4040



SAND CORDUROY LRV 46
400 x 400 DW-TCSND4040



Features / Suitability

400 x 400 x 12.5mm • 6.2pcs / 27.9kg per m²

Tactile Corduroy contains porcelain aggregate throughout the tile body, for hard wearing and sustainable qualities. The Corduroy profile is designed to warn visually impaired people of the presence of specific hazards and implies 'proceed with caution'. The two shades are contrasting colours which meet current building regulations for LRV contrasting variance. Features include:

- ▶ Thickness of 12.5mm for very heavy traffic areas
- ▶ Meets the requirements of the Joint Mobility Unit of the RNIB, DETR and the CAE
- ▶ Exceptional performance and safety standards
- ▶ Network Rail approved
- ▶ No colour fading in UV light

DISPLACEMENT VOLUME	SHOD DRY (4S96 dry)	SHOD WET (4S96 wet)	BAREFOOT WET (TRRL 55 wet)	RAMP TEST
n/a	62	57	n/a	n/a

Tested to
London Underground Ltd
TMI44:1999 Modified Standard



FULL TECHNICAL
SPECIFICATIONS
OVERLEAF

Fully Vitrified Dust Pressed Tiles - BS EN 14411:2016 GROUP B1a

	Standard	Requirement (400 x 400 x 12.5mm)	Typical test value
Length and Width	EN ISO 10545-2	+/- 0.6% max +/- 2.0 mm	400mm
Base Tile Thickness (Excluding Corderoy/Blister Height)	EN ISO 10545-2	12.5 ± 0.5mm	12.5mm
Surface Quality	EN ISO 10545-2	< 95% free from visible defects	< 97% free from visible defects
Water Absorption % by Mass	EN ISO 10545-3	< /= 0.5% Individual max 0.6%	<0.35%
Breaking Strength - Thickness > 7.5mm	EN ISO 10545-4	> 1300 N	> 4500 N
Resistance to Deep Abrasion: Removed Vol.	EN ISO 10545-6	Maximum 175 mm ³	< 130 mm ³
Thermal Shock Resistance	EN ISO 10545-9	Cycled 10 times between a temperature of 15 and 145 Degrees C	Fully Resistant
Frost Resistance	EN ISO 10545-12	100 Freeze Thaw Cycles	Resistant
Surface Roughness Rz	BS1134	Indicator - Rz > 20 microns	31 microns
Tactility	DD CEN/TS 15209:2008	DD CEN/TS 15209:2008	Conforms
Light Reflectance Value	BS 8493	Min 30 LRV between two adjacent surfaces	46 Sand 8 Anthracite
MOHS Hardness	MOHS UNE 67-101-92	MOHS Scale > plus 6	8 MOHS
Resistance to Chemicals Low Concentrations	EN ISO 10545-13	Low Acids and Alkali	ULA No Visible Effects
Resistance to Chemicals High Concentrations	EN ISO 10545-13	High Acids and Alkali	UHA No Visible Effects
Combustible Class	93/68/EEC	Non Combustible Class A1 _{FL}	Non Combustible Class A1 _{FL}

Recycled Content:	Pre Consumer 4%	Post Consumer 100%
Environmental	Products contain no VOC's	

Slip Resistance (TMM144:1999 Modified London Underground Limited Method)

Test condition	Tested along		Tested across		Tested at 45 degrees		Pass/Fail CoF	Pass/Fail distance below 0.4 CoF
	CoF	Distance CoF below 0.4(mm)	CoF	Distance CoF below 0.4(mm)	CoF	Distance CoF below 0.4(mm)		
Dry	0.49	5	0.64	15	0.61	0	Pass	Pass
Wet	0.44	5	0.53	17.5	0.60	5	Pass	Pass

Architects, specifiers and design professionals:

For further information, advice or guidance on choosing specific Dorset Woolliscroft products please contact us on 01392 473030 / info@dorsetwoolliscroft.com