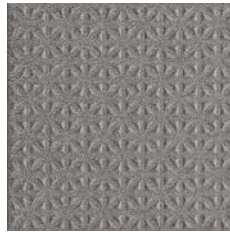


Fully Vitrified Dust Pressed Tiles - Annex G, Group Bla



STEEL GREY LRV 35
148 x 148 DW-TESGR1515
300 x 300 DW-TESGR3030



DARK GREY LRV 16
148 x 148 DW-TEDGR1515
300 x 300 DW-TEDGR3030



QUARTZ LRV 37
148 x 148 DW-TEQUZ1515
300 x 300 DW-TEQUZ3030



WHITE LRV 52
148 x 148 DW-TEWHT1515



SURFACE DETAIL



Features / Suitability

148 x 148 x 9mm • 44pcs / 20kg per m²
300 x 300 x 9mm • 11pcs / 20kg per m²

The pyramid shapes on the surface profile means that Tetra has excellent slip resistant qualities for all areas of bare foot and shod foot traffic. It has good volume displacement properties (V4) as the profile has been designed to pierce surface debris – make it a great choice for preparation areas where heavy soiling is likely.

Also use it for:

- ▶ Changing rooms and shower areas in swimming pools and health spa's
- ▶ Retail and light industrial units
- ▶ Commercial kitchens and food preparation areas
- ▶ External walkways

DISPLACEMENT VOLUME	SHOD DRY (4S96 dry)	SHOD WET (4S96 wet)	BAREFOOT WET (TRRL 55 wet)	RAMP TEST
V4	65	55	42	R11 C



FULL TECHNICAL
SPECIFICATIONS
OVERLEAF

Fully Vitrified Dust Pressed Tiles - Annex G, Group Bla

	Standard	Requirement		Typical Test Value
		148 x 148 x 9mm	300 x 300 x 9mm	
Length & Width	EN ISO 10545-2	+/- 0.9 mm	+/- 0.6% max +/- 2.0 mm	Conforms
Thickness	EN ISO 10545-2	+/- 0.5 mm	+/- 5.0% max +/- 0.5 mm	Conforms
Straightness of Sides	EN ISO 10545-2	+/- 0.75 mm	+/- 0.5% max +/- 1.5 mm	Conforms
Rectangularity	EN ISO 10545-2	+/- 0.75 mm	+/- 0.5% max +/- 2.0 mm	Conforms
Surface Flatness: A-B-C	EN ISO 10545-2	+/- 0.75 mm	+/- 0.5% max +/- 2.0 mm	Conforms
Surface Quality	EN ISO 10545-2	A minimum of 95% of the tiles will be free from visible defects		Conforms
Water Absorption % by Mass	EN ISO 10545-3	< 0.5%		Group Bla Fully Vitrified
Breaking Strength ≥ 7.5 mm	EN ISO 10545-4	>1300N		Conforms 3583N
Modulus of Rupture	EN ISO 10545-4 N/mm ² N	Minimum 35 N/mm ² Individual minimum 32		Conforms
Resistant to Deep Abrasion of Unglazed Tiles	EN ISO 10545-6	Maximum 175vmm ³		Between 22.1mm / 101vmm ³ and 23.8mm / 111vmm ³
Thermal Shock Resistance	EN ISO 10545-9	Cycled 10 times between temperature of 15° & 145° C		Fully Resistant
Frost Resistance	EN ISO 10545-12	100 Freeze Thaw Cycles		No Damage
Resistance to Household Chemicals and Swimming Pool Salts	EN ISO 10545-13	Minimum UB		UA No Visible Effects
	EN ISO 10545-13	Low Acids & Alkali		ULA No Visible Effects
	EN ISO 10545-13	High Acids & Alkali		UHA No Visible Effects
Surface Hardness MOHS UNE 67-101-92-2012	>6	>6		>6
Reaction to Fire EN14411 Annex ZA, classified without testing (CWT)	93/68/EEC	When installed on walls A1 When installed on floors A1 _{FL}		Non combustible
Recycled Content	Pre Consumer 4%		Post Consumer 100%	
Environmental	Products do not contain VOCs			

Architects, specifiers and design professionals:

For further information, advice or guidance on choosing specific Dorset Woolliscroft products please contact us on 01392 473030 / info@dorsetwoolliscroft.com