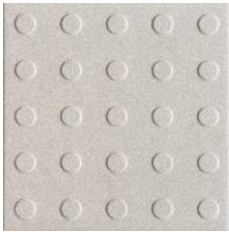
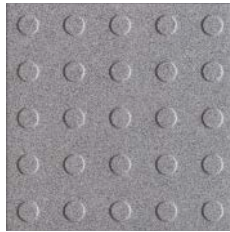


## Fully Vitrified Dust Pressed Tiles - Annex G, Group Bla



**STEEL GREY LRV 35**  
148 x 148 DW-MDSGR1515



**DARK GREY LRV 16**  
148 x 148 DW-MDDGR1515



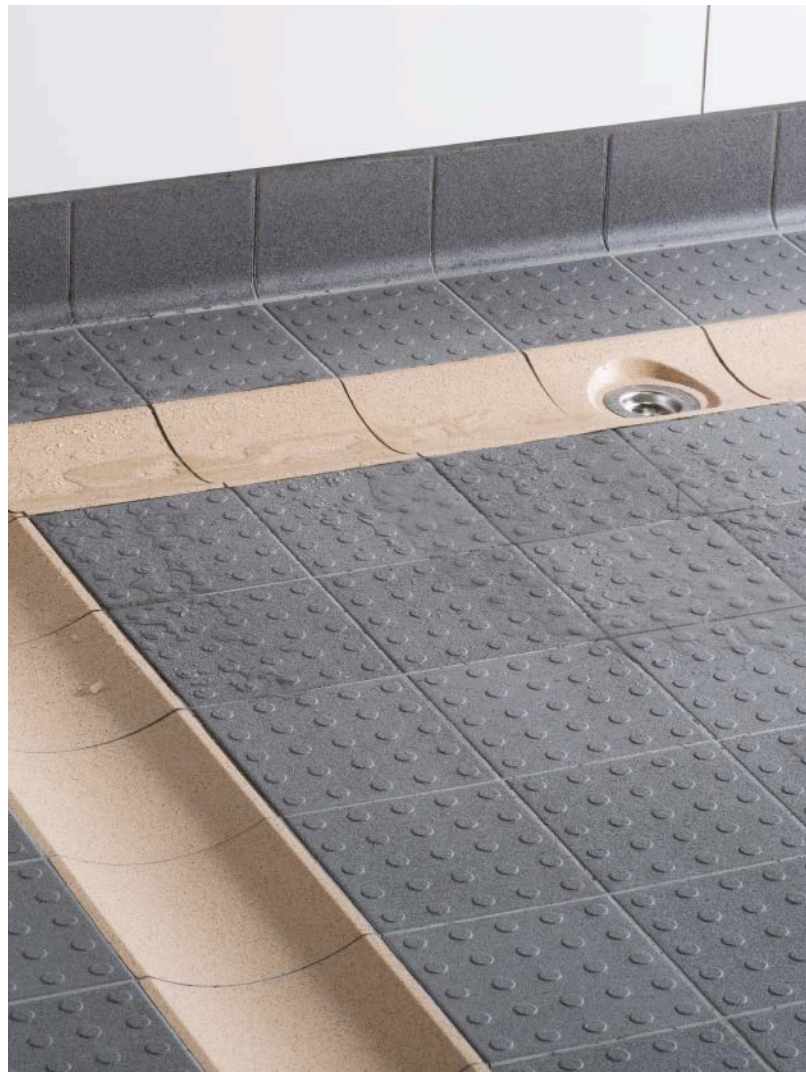
**WHITE LRV 52**  
148 x 148 DW-MDWHT1515



**QUARTZ LRV 37**  
148 x 148 DW-MDQUZ1515



**SURFACE DETAIL**



## Features / suitability

148 x 148 x 9mm • 44pcs / 20kg per m<sup>2</sup>

As well as being good to look at, Multidisc's round raised surface structure is also comfortable underfoot even with bare feet. The pendulum tests to assess slip resistant in both wet and dry conditions show exceptional low levels of slip potential (70 dry/58 wet). Its V6 volume displacement results show its suitability for commercial kitchens and food preparation areas, and it is still easy to keep clean.

Suitable for:

- ▶ High traffic areas in both dry and wet conditions, internal and external
- ▶ Barefoot wet areas like changing rooms, showers, toilets in leisure complexes and swimming pools
- ▶ Commercial hospitality settings like fast food units

DISPLACEMENT VOLUME	SHOD DRY (4S96 dry)	SHOD WET (4S96 wet)	BAREFOOT WET (TRRL 55 wet)	RAMP TEST
V6	70	58	44	R12 C



FULL TECHNICAL  
SPECIFICATIONS  
OVERLEAF

## Fully Vitrified Dust Pressed Tiles - Annex G, Group Bla

	Standard	Requirement (148 x 148 x 9mm)	Typical Test Value
Length & Width	EN ISO 10545-2	+/- 0.9 mm	Conforms
Thickness	EN ISO 10545-2	+/- 0.5 mm	Conforms
Straightness of Sides	EN ISO 10545-2	+/- 0.75 mm	Conforms
Rectangularity	EN ISO 10545-2	+/- 0.75 mm	Conforms
Surface Flatness: A-B-C	EN ISO 10545-2	+/- 0.75 mm	Conforms
Surface Quality	EN ISO 10545-2	A minimum of 95% of the tiles will be free from visible defects	Conforms
Water Absorption % by Mass	EN ISO 10545-3	< 0.5%	Group Bla Fully Vitrified
Breaking Strength $\geq 7.5\text{mm}$	EN ISO 10545-4	>1300N	Conforms 3583N
Modulus of Rupture	EN ISO 10545-4 N/mm <sup>2</sup> N	Minimum 35 N/mm <sup>2</sup> Individual minimum 32	Conforms
Resistant to Deep Abrasion of Unglazed Tiles	EN ISO 10545-6	Maximum 175vmm <sup>3</sup>	Between 20.9mm / 75vmm <sup>3</sup> and 22.2mm / 91vmm <sup>3</sup>
Thermal Shock Resistance	EN ISO 10545-9	Cycled 10 times between temperature of 15° & 145° C	Fully Resistant
Frost Resistance	EN ISO 10545-12	100 Freeze Thaw Cycles	No Damage
Resistance to Household Chemicals and Swimming Pool Salts	EN ISO 10545-13	Minimum UB	UA No Visible Effects
	EN ISO 10545-13	Low Acids & Alkali	ULA No Visible Effects
	EN ISO 10545-13	High Acids & Alkali	UHA No Visible Effects
Surface Hardness MOHS UNE 67-101-92-2012	>6	>6	>6
Reaction to Fire EN14411 Annex ZA, classified without testing (CWT)	93/68/EEC	When installed on walls A1 When installed on floors A1 <sub>FL</sub>	Non combustible
Recycled Content	Pre Consumer 4%		Post Consumer 100%
Environmental	Products do not contain VOCs		

Architects, specifiers and design professionals:

For further information, advice or guidance on choosing specific Dorset Woolliscroft products please contact us on 01392 473030 / [info@dorsetwoolliscroft.com](mailto:info@dorsetwoolliscroft.com)