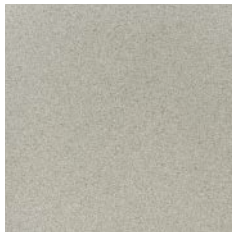
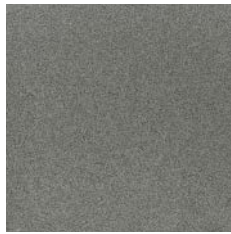


## Fully Vitrified Dust Pressed Tiles - Annex G, Group Bla



**STEEL GREY LRV 35**  
148 x 148 DW-FLSGR1515  
300 x 300 DW-FLSGR3030



**DARK GREY LRV 16**  
148 x 148 DW-FLDGR1515  
300 x 300 DW-FLDGR3030



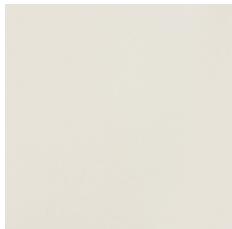
**SURFACE DETAIL**  
WHITE, RED & BLACK are solid colours.  
STONE, QUARTZ, STEEL GREY &  
DARK GREY have a flecked effect.



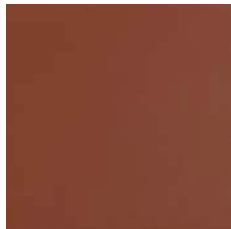
**QUARTZ LRV 37**  
148 x 148 DW-FLQUZ1515  
300 x 300 DW-FLQUZ3030



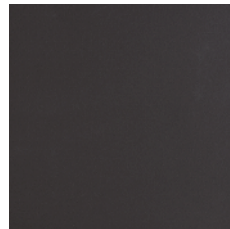
**STONE LRV 46**  
148 x 148 DW-FLSTO1515



**WHITE LRV 52**  
148 x 148 DW-FLWHT1515



**RED LRV 12**  
148 x 148 DW-FLRED1515



**BLACK LRV 9**  
148 x 148 DW-FLBLK1515



## Features / Suitability

148 x 148 x 9mm • 44pcs / 20kg per m<sup>2</sup>  
300 x 300 x 9mm • 11pcs / 20kg per m<sup>2</sup>

A versatile smooth surfaced tile in 2 sizes and 7 colours, which is easy to keep clean.

- ▶ Light catering areas with high traffic such as snack bars, cafes, pubs, bars and restaurants (front of house)
- ▶ Industrial and retail areas such as shops and workshops
- ▶ Residential settings like kitchens and hallways
- ▶ Flat tiles are fully vitrified and are suitable for external use, including floors (shod areas only) or on walls
- ▶ Attractive and practical for external cladding

DISPLACEMENT VOLUME	SHOD DRY (4S96 dry)	SHOD WET (4S96 wet)	BAREFOOT WET (TRRL 55 wet)	RAMP TEST
n/a	53	37	n/a	R10 A



FULL TECHNICAL SPECIFICATIONS OVERLEAF

## Fully Vitrified Dust Pressed Tiles - Annex G, Group Bla

	Standard	Requirement		Typical Test Value
		148 x 148 x 9mm	300 x 300 x 9mm	
Length & Width	EN ISO 10545-2	+/- 0.9 mm	+/- 0.6% max +/- 2.0 mm	Conforms
Thickness	EN ISO 10545-2	+/- 0.5 mm	+/- 5.0% max +/- 0.5 mm	Conforms
Straightness of Sides	EN ISO 10545-2	+/- 0.75 mm	+/- 0.5% max +/- 1.5 mm	Conforms
Rectangularity	EN ISO 10545-2	+/- 0.75 mm	+/- 0.5% max +/- 2.0 mm	Conforms
Surface Flatness: A-B-C	EN ISO 10545-2	+/- 0.75 mm	+/- 0.5% max +/- 2.0 mm	Conforms
Surface Quality	EN ISO 10545-2	A minimum of 95% of the tiles will be free from visible defects		Conforms
Water Absorption % by Mass	EN ISO 10545-3	< 0.5%		Group Bla Fully Vitrified
Breaking Strength $\geq 7.5$ mm	EN ISO 10545-4	>1300N		Conforms 3583N
Modulus of Rupture	EN ISO 10545-4 N/mm <sup>2</sup> N	Minimum 35 N/mm <sup>2</sup> Individual minimum 32		Conforms
Resistant to Deep Abrasion of Unglazed Tiles	EN ISO 10545-6	Maximum 175vmm <sup>3</sup>		Between 19.8mm / 65vmm <sup>3</sup> and 23.4mm / 108vmm <sup>3</sup>
Thermal Shock Resistance	EN ISO 10545-9	Cycled 10 times between temperature of 15° & 145° C		Fully Resistant
Frost Resistance	EN ISO 10545-12	100 Freeze Thaw Cycles		No Damage
Resistance to Household Chemicals and Swimming Pool Salts	EN ISO 10545-13	Minimum UB		UA No Visible Effects
	EN ISO 10545-13	Low Acids & Alkali		ULA No Visible Effects
	EN ISO 10545-13	High Acids & Alkali		UHA No Visible Effects
Surface Hardness MOHS UNE 67-101-92-2012	>6	>6		>6
Reaction to Fire EN14411 Annex ZA, classified without testing (CWT)	93/68/EEC	When installed on walls A1 When installed on floors A1 <sub>FL</sub>		Non combustible
Recycled Content	Pre Consumer 4%		Post Consumer 100%	
Environmental	Products do not contain VOCs			

Architects, specifiers and design professionals:

For further information, advice or guidance on choosing specific Dorset Woolliscroft products please contact us on 01392 473030 / [info@dorsetwoolliscroft.com](mailto:info@dorsetwoolliscroft.com)